

EDGE ARTICLE

Cite this: *Chem. Sci.*, 2019, 10, 5056

All publication charges for this article have been paid for by the Royal Society of Chemistry

Efficient development of stable and highly functionalised peptides targeting the CK2 α /CK2 β protein–protein interaction†Jessica Iegre,^a Paul Brear,^b David J. Baker,^c Yaw Sing Tan,^d Eleanor L. Atkinson,^a Hannah F. Sore,^a Daniel H. O' Donovan,^e Chandra S. Verma,^{dfg} Marko Hyvönen^{*b} and David R. Spring^{id *a}

The discovery of new Protein–Protein Interaction (PPI) modulators is currently limited by the difficulties associated with the design and synthesis of selective small molecule inhibitors. Peptides are a potential solution for disrupting PPIs; however, they typically suffer from poor stability *in vivo* and limited tissue penetration hampering their wide spread use as new chemical biology tools and potential therapeutics. In this work, a combination of CuAAC chemistry, molecular modelling, X-ray crystallography, and biological validation allowed us to develop highly functionalised peptide PPI inhibitors of the protein CK2. The lead peptide, **CAM7117**, prevents the formation of the holoenzyme assembly *in vitro*, slows down proliferation, induces apoptosis in cancer cells and is stable in human serum. **CAM7117** could aid the development of novel CK2 inhibitors acting at the interface and help to fully understand the intracellular pathways involving CK2. Importantly, the approach adopted herein could be applied to many PPI targets and has the potential to ease the study of PPIs by efficiently providing access to functionalised peptides.

Received 15th February 2019

Accepted 11th April 2019

DOI: 10.1039/c9sc00798a

rsc.li/chemical-science

Introduction

Proteins are an essential component of the cell. They exert physio-pathological functions in response to external and internal messengers in a highly regulated and selective manner. Many of these functions are made possible by a complicated network of protein–protein interactions (PPIs). Targeting of PPIs is seen as an attractive therapeutic strategy considering the large number of PPIs involved in pathological mechanisms. In addition, targeting of PPIs provides orthogonality with respect to conventional therapeutics, which are typically targeted against existing binding sites for small molecules. Therefore, inhibition of PPIs may result in the development of safer drugs.¹

PPIs are characterised by shallow surfaces which make targeting them with conventional small molecules (<500 Da), whilst possible,^{2–7} a non-trivial and lengthy process. Synthetic peptides, on the other hand, provide a valuable alternative to small molecules: their structural properties make them amenable to mimic portions of the native proteins resulting in favorable interactions with the large and shallow interfaces of PPIs.⁸ In addition, when structural information pertaining to the PPI of interest is known, potent and selective peptides can be rapidly designed based upon the sequence of targeted motifs of the native proteins.⁹

However, the poor pharmacokinetic (PK) properties of synthetic peptides in the body limit their use and interest to the pharmaceutical industry.¹⁰ Many strategies have been adopted to overcome the PK limitations of peptides; yet, very few of them are set up to provide peptides that are highly functionalised and cell-permeable in an efficient manner.^{11–15} Taking into account the potency and selectivity of peptides, methodologies that introduce functionalities to make them simultaneously stable and cell-permeable would yield chemical probes of invaluable importance.¹⁶ To this end, we have developed a two-component (2C) copper catalyzed azido alkyne (CuAAC) peptide stapling (PS) methodology that allows the development of highly functionalised, potent, and selective peptides targeting intracellular PPIs.¹⁷ In 2C-CuAAC-PS only a limited number of peptides are synthesised and their design is based upon the structural information available for the PPI of interest.¹⁸ Subsequently,

^aDepartment of Chemistry, University of Cambridge, Lensfield Road, CB2 1EW, Cambridge, UK. E-mail: spring@ch.cam.ac.uk

^bDepartment of Biochemistry, University of Cambridge, Tennis Court Road, CB2 1GA, Cambridge, UK. E-mail: mh256@cam.ac.uk

^cDiscovery Sciences, IMED Biotech Unit, AstraZeneca, Cambridge, UK

^dBioinformatics Institute, Agency for Science, Technology and Research (A*STAR), 30 Biopolis Street, #07-01 Matrix, Singapore 138671

^eOncology, IMED Biotech Unit, AstraZeneca, Cambridge, UK

^fDepartment of Biological Sciences, National University of Singapore, 14 Science Drive 4, Singapore 117543

^gSchool of Biological Sciences, Nanyang Technological University, 60 Nanyang Drive, Singapore 637551

† Electronic supplementary information (ESI) available. See DOI: 10.1039/c9sc00798a

peptide stapling is carried out by using amino acids with azido side chains and a di-alkyne linker as a constraint. One of the advantages of this methodology is that the linker can be modified and functionalised to improve the *in vitro* pharmacological properties independently from the peptide sequence: the result is a more efficient optimisation of the peptides. Biophysical and cellular assays are successively used to assess the peptides synthesised. Importantly, the 2C-CuAAC-PS chemistry proved to be compatible with all the natural amino acids, led to enhanced binding affinities for both helical and non-helical peptides and improved the overall *in vitro* pharmacological properties of the peptides, including stability to proteases.^{19–21}

Herein, we have applied this robust approach to efficiently develop the first stable and highly functionalised conformationally-constrained peptide acting on the PPI of CK2.

CK2 is a protein kinase overexpressed in cancer cells and a validated oncology target; CX4945, a traditional small molecule ATP-binding site inhibitor of CK2, is currently undergoing clinical studies.²² However, CX4945 targets the ATP-binding site, which is well conserved among the kinome. More recently, there have been increasing efforts to develop non-ATP competitive inhibitors of CK2 to reduce the off-target effects of competitive ligands.^{23–25} Among the strategies designed to target CK2 outside its orthosteric binding site, is the inhibition of the PPI between the α and the β subunits.^{26–29} Disruption of the holoenzyme assembly affects the function of CK2 by preventing phosphorylation of β -dependent substrates, the shuttling of the protein between different intracellular compartments, and by reducing the stability of the catalytic α subunit (Fig. 1).^{30–33} With the exception of the Phe pocket, the CK2 α / β interface is a shallow and

hydrophobic surface; consequently, peptides are an ideal class of molecule to target this PPI. To this end, two cyclic peptides have been developed. However, one of these, Pc,^{26,28} is a disulfide-linked cyclic peptide that lacks cell permeability and stability in the reducing intracellular environment, and the other, TAT-Pc,³⁴ has not been assessed structurally or for stability in physiologic fluids (Fig. 1). Therefore, a stable chemical probe that could be used *in vitro* and *in vivo* to study the interface of the important protein CK2 is still required.

Starting from the sequences of CK2 β and Pc, we investigated alternative ways of constraining the peptide into its bioactive conformation using a stable linkage compatible with the 2C-CuAAC-PS chemistry. At a later stage, X-ray crystallography guided our investigation on sequence variation to increase the binding affinity of the peptide for CK2 α . The most promising peptide was easily modified into a fluorescent, cell-permeable probe *via* a novel highly functionalised constraint that allowed us to study the peptide's activity in cancer cells.

The peptide developed in this work is the first stable, cell permeable macrocyclic peptide that disrupts the CK2 α / β PPI *in vitro* and leads to cancer cell death and arrest of the cell cycle; as such, it will serve as a useful chemical probe in oncology. Furthermore, the structure of the peptide in complex with CK2 α will act as a valuable starting point to develop novel CK2 inhibitors.

Results and discussion

In order to design stable peptides targeting the CK2 α / β interaction, we used a rational-design approach based on the valuable crystal structures of CK2 β and the disulfide bridged Pc peptide.³⁴

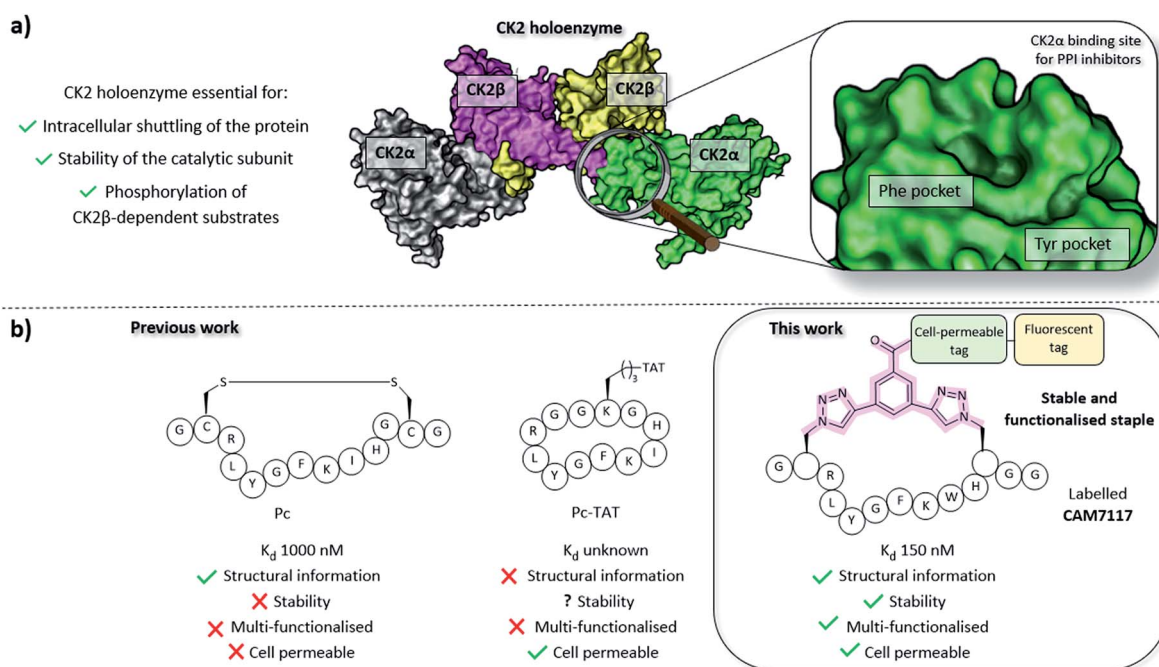


Fig. 1 (a) Importance of the holoenzyme to the functions of CK2 (PDB: 1JWH). The catalytic α subunits are shown in grey and green, the regulatory β subunits in yellow and pink. The binding site on CK2 α for inhibitors of the PPI is shown on the right. (b) A comparison of the peptides developed prior to this work (Pc and TAT-Pc)^{26,28,34} and the lead peptide CAM7117 developed in this work.

Disulfide bridges are unstable under reducing environments; therefore, our aim was to replace the labile disulfide group with a stable constraint. To this end, the 2C-CuAAC macrocyclisation technique was chosen for its validated ability to constrain peptides in their binding conformation, simultaneously enhance the stability against proteolytic cleavage, introduce functionalities (cell-penetrating peptide (CPP), fluorescent dyes, biotin, and PEG and other tags), and improve the poor stability in physiological fluids and cell-penetration in a combinatorial manner.^{19,20,35–38}

Rational design of conformationally constrained peptides mimicking CK2 β

Molecular modelling identified Cys2 and Gly11 of Pc,³⁴ corresponding to P185 and P194 of CK2 β , as suitable residues to staple: they make negligible contributions to the binding and are positioned at a suitable distance from each other to accommodate a 2C-CuAAC staple (ESI, Fig. S1†). To cyclise the peptide, azido amino acids bearing one-carbon-atom side chains (Fmoc-Aza-OH) were used in combination with aliphatic linkers of different lengths as proposed by molecular modelling (Fig. 2 and ESI Table S1†). The ability of the synthesised macrocycles to disrupt the α/β PPI of CK2 was then tested in a preliminary fluorescent polarisation assay (FP) (Fig. 2).

Peptides constrained with linkers C2 and C3 proved to be insoluble under the assay conditions. To overcome this limitation, it was decided to incorporate a functional handle on the constraint to simultaneously improve the solubility and allow for future functionalisation of the peptides. Peptide **P1-C4** was

the most effective macrocyclised peptide at displacing the FP probe from the CK2 α subunit ($93 \pm 1\%$ inhibition at $15 \mu\text{M}$). This suggested that constraint C4 was optimal at constraining the peptide in its binding conformation. The binding affinity of **P1-C4** and **P1-C5** for the CK2 α subunit was measured *via* isothermal titration calorimetry (ITC). **P1-C4** showed the highest affinity with a K_d of 460 nM, showing a modest increase compared to Pc (1000 nM, ESI Table S3†).

To understand how **P1-C4** was able to bind CK2 α , we determined its crystal structure in complex with CK2 α (PDB: 6Q38). The crystal structure showed the peptide binding in a conformation that overlays well with CK2 β and Pc (Fig. 3a–c). The backbone residues of **P1-C4** are all slightly shifted compared to Pc; however, these differences are greatest closer to the constraint that holds the two ends of the peptide further apart than the disulfide linker does; consequently, the terminal residues adopt entirely different conformations (Fig. 3b and c).

The X-ray crystal structure of **P1-C4** (Fig. 3d) shows Ile9 oriented in the right direction to be replaced by an amino acid capable of π – π stacking with the benzene ring of the C4 constraint. Similarly, chlorobenzene probes in ligand-mapping MD simulations^{39,40} of **P1-C4** indicated a region of high occupancy by the aromatic carbon atoms of chlorobenzene around Ile9 of the peptide (ESI Table S1†). Therefore, the sequence of **P1** was modified to replace Ile9 with a larger, non-polar Trp to create peptide **P2** (Ac-GXRLYGFKWHXGG-NH₂ where X = Fmoc-Aza-OH). The resulting peptide was macrocyclised using C4 as a linker to afford **P2-C4**.

The binding affinity of the **P2-C4** peptide was found to be enhanced (K_d 150 nM) compared to both **P1-C4** (K_d 460 nM) and Pc peptide (K_d 1000 nM) (Fig. 4a and ESI Table S3†). The constrained **P2-C4** peptide showed also a 300-fold improvement compared to the linear variant **P2** (K_d 44 μM). The crystal structure of **P2-C4** bound to CK2 α (PDB: 6Q4Q, Fig. 3e and f) shows the π – π stacking between the Trp and the phenyl ring of the constraint. It is likely that this π – π stacking is the main factor leading to the higher affinity of **P2-C4** as no other significant interactions were observed (ESI Fig. S2†). Therefore, the increased binding affinity of **P2-C4** for CK2 α may be explained with a reduced entropic penalty upon binding due to the rigidifying interaction occurring between the constraint and the Trp residue.^{41–43}

Inhibition of the CK2 α/β protein–protein interaction

We then wanted to investigate whether the peptides would be able to inhibit the binding of the β subunit to the α subunit. To this end, the binding affinity of the regulatory β subunit for the catalytic domain was determined *via* ITC (K_d 9 nM). This was then repeated in the presence of $100 \mu\text{M}$ **P1-C4** and **P2-C4** (ESI, Table S4†). This preliminary assay showed that no binding of CK2 β to CK2 α was detected in the presence of either of the peptides: this result confirms that the peptides bind at the interface and prevent CK2 β binding despite its high binding affinity for CK2 α . As an orthogonal proof of inhibition, we used competition Bio-Layer Interferometry (BLI) experiments to demonstrate that **P2-C4** was able to prevent the formation of the

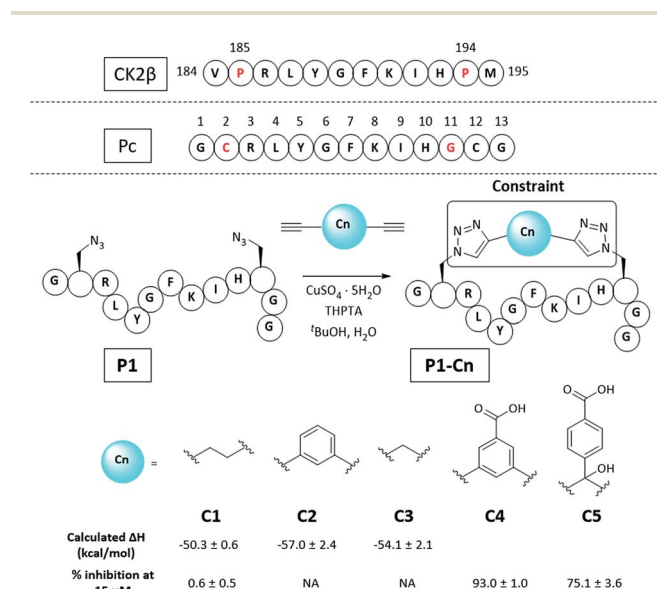


Fig. 2 Sequence of the portion of CK2 β binding to CK2 α , Pc peptide and structure of the constrained peptides reported in this work with calculated enthalpic values of binding and percentage of CK2 β -like probe displacement. NA = not measured. A detailed table with the structures of all the peptides presented in this work is provided in the ESI (Table S2†). Pc, **P1**, and **P1-Cn** (where $n = 1$ –5) peptides feature an amide at the C-terminus and an acetyl cap at the N-terminus. All the amino acids are the L isomers.

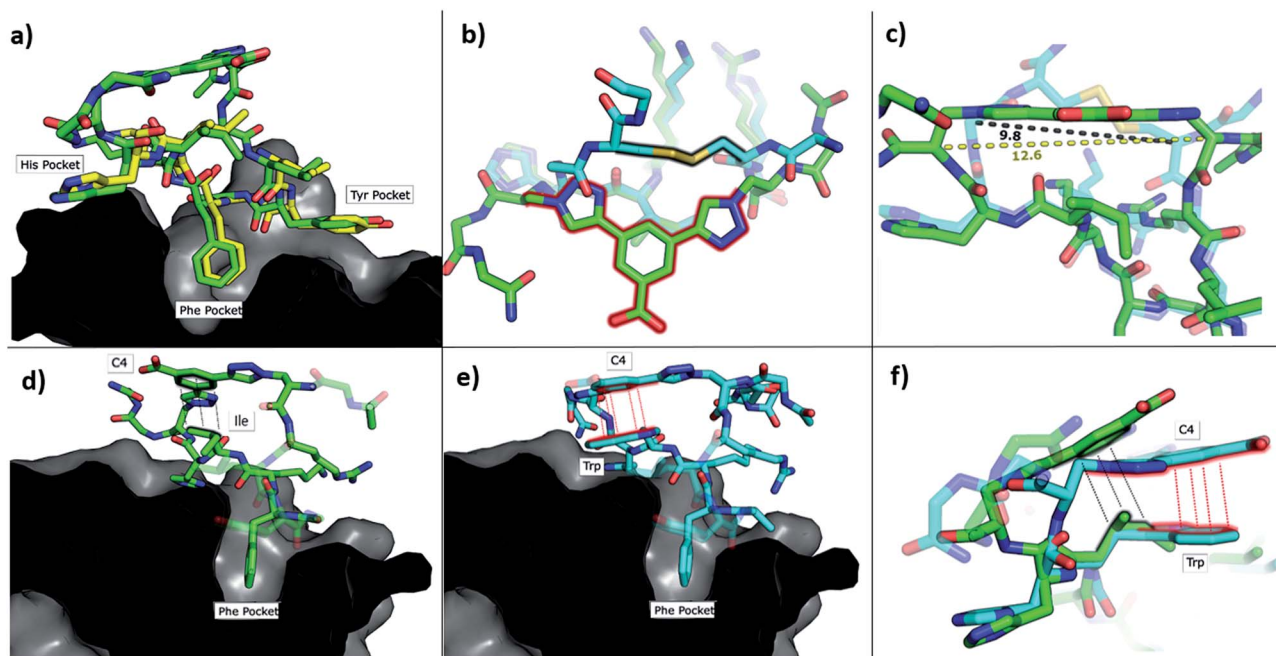


Fig. 3 Crystallographic structures of conformationally constrained peptides. (a) P1-C4 (green, PDB: 6Q38) and residues 186-193 of CK2 β (yellow, PDB: 4NH1 (ref. 44)) in complex with CK2 α . The image is shown as a cross-section of the interface site. (b) A comparison of the binding mode of the two different linkers in Pc (cyan, PDB: 4IB5 (ref. 34)) and P1-C4 (green). (c) Difference in the distance between the α -carbons of the amino acids involved in the constraint in Pc (cyan) and P1-C4 (green). (d) Crystallographic structure of P1-C4 (green) binding at the interface site. The image is shown as a cross-section of the interface site. (e) Crystallographic structure of P2-C4 (cyan, PDB: 6Q4Q) binding at the interface site. Stacking of the Trp residue with the constraint is highlighted in red. The image is shown as a cross-section of the interface site. (f) Comparison of the binding mode of P1-C4 (green) and P2-C4 (cyan) bound to the interface site.

CK2 α /CK2 β -RAD \ddagger complex with an IC₅₀ of 150 \pm 19 nM (Fig. 4b). As one of the key roles of CK2 β is to recruit substrates to the kinase, the effect of PPI inhibition on substrate phosphorylation was studied using CK2 β dependent and independent substrates. It was shown that P2-C4 was able to inhibit the phosphorylation of a CK2 β -dependent substrate – the

transcription factor eIF2 β – with an IC₅₀ of 206 \pm 29 nM (Fig. 4c). It should be noted that the kinase assay was performed using the pre-formed CK2 α / β complex as the ability of CK2 α to phosphorylate eIF2 β requires the presence of the CK2 β subunit. The assay indicates that P2-C4 can disrupt, in a dose-dependent manner, the CK2 holoenzyme thereby reducing the ability of

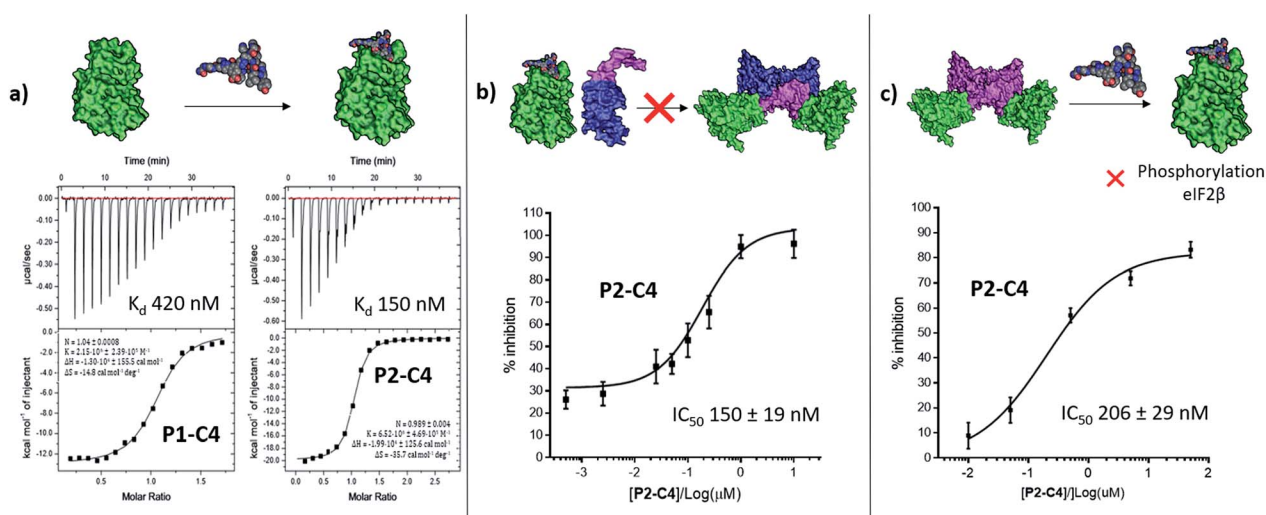


Fig. 4 *In vitro* assessment of P1-C4 and P2-C4. (a) ITC binding curves of P1-C4 and P2-C4. A schematic representation of the peptide association with CK2 α (green) is shown on the top of the ITC curves. (b) Ability of P2-C4 to cause inhibition of the association of the CK2 α /CK2 β -like holoenzyme using CK2 α (green) and CK2 β -RAD (pink and blue). (c) Ability of P2-C4 to cause inhibition of the catalytic activity of CK2 α (green) towards a CK2 β -dependent substrate eIF2 β by P2-C4. Starting CK2 holoenzyme is shown in green and pink; peptide is shown as spheres.

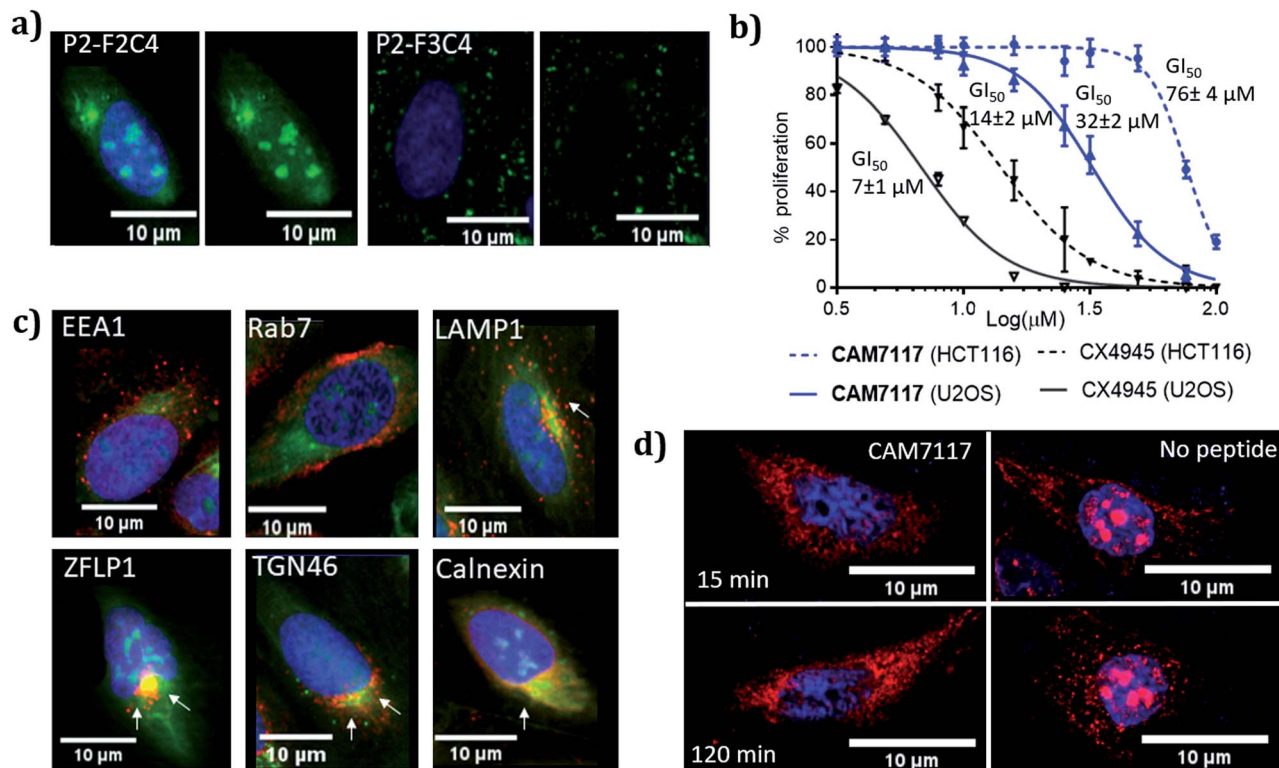


Fig. 6 Biological evaluation of CAM7117 and its analogues in cancer cells. (a) Cellular uptake in U2OS cell line for P2-F2C4 and P2-F3C4. Cell nuclei are stained with Hoechst 33342 stain (blue). (b) GI_{50} curves of the antiproliferative activity of CAM7117 (solid and dashed blue lines) and CX4945 (solid and dashed black line) in U2OS and HCT116 cells. (c) Immunofluorescence experiments in the presence of FITC-labelled peptide P2-F2C4 (green), stained with antibodies against markers of different organelles (all in red): EEA1 (early endosome), Rab7 (late endosome), LAMP1 (lysosomes), ZFLP1 (*cis* Golgi), TGN46 (*trans* Golgi) and calnexin (endoplasmic reticulum). Details of antibodies are found in Table S11.† Nuclei are stained with Hoechst 33342 (blue). (d) Change in intracellular localisation of CK2 β (red) following treatment with CAM7117 (30 μ M) for 15 and 120 minutes. Nuclei are stained with Hoechst 33342 (blue).

Further imaging experiments using U2OS cells were carried out to evaluate the effect of CAM7117 in subcellular localisation of the CK2 subunits.

Already after 15 minute incubation, little or no fluorescence associated with the CK2 β antibody was found in the nucleus; on the contrary, untreated cells showed significant punctate staining nuclear accumulation of the CK2 β (Fig. 6d). This evidence suggests that CAM7117 could engage with CK2 α and compete with CK2 β in a cellular context.

Conclusions

In the present study, we have showcased an approach to efficiently develop peptides that are highly functionalised, cell-permeable and stable in serum. In particular, using the 2C-CuAAC-PS methodology, we have developed conformationally constrained peptides that act as inhibitors of the CK2 α/β PPI *in vitro* and in cancer cells. The lead peptide, CAM7117, presents an enhanced binding affinity for CK2 α with respect to the previously developed Pc and, most importantly, is stable under conditions mimicking physiological fluids. Owing to the lack of intrinsic cell-permeability of the peptides, we developed an easily-synthesised multi-functional constraint that allowed us to investigate the intracellular activity of

CAM7117, which arrests cancer cell proliferation and induces apoptosis in a dose-dependent manner. To the best of our knowledge, this study describes the development of the first inhibitory peptide of the CK2 α/β PPI that is: stable in serum, cell permeable, active in cells, able to engage the target and structurally characterised. Such a peptide would act as a chemical probe that enables the study of the CK2 PPI using endogenous levels of proteins and could, therefore, be used to elucidate CK2 dependent mechanisms leading to cancer progression.

Remarkably, the multi-functional constraint developed in this work could be used to lock other peptides into their binding conformation and simultaneously functionalise them. Therefore, the strategy adopted herein could, provide a more universal approach to develop modulators of PPIs for many targets where linear sequence epitope provides the majority of the binding energy. Moreover, considering that the peptide addition to either cells or organisms can be done with rigorous temporal and quantitative control, these probes are extremely powerful tools for validating PPIs in drug discovery and dissecting biological processes.

Conflicts of interest

There are no conflicts to declare.

Acknowledgements

This work was funded by the European Research Council under the European Union's Seventh Framework Programme (FP7/2007-2013)/ERC and the Wellcome Trust Strategic (090340/Z/09/Z) Award (to DRS and MH). In addition, the group research was supported by grants from the Engineering and Physical Sciences Research Council, Biotechnology and Biological Sciences Research Council, Medical Research Council and Royal Society. JI would like to thank Trinity College, University of Cambridge for funding. YST and CSV would like to thank A*STAR (IAF-PP H17/01/a0/010) for support. We would like to thank Diamond Light Source for access to and support at beamline iO4 (proposal 18548) and the Department of Biochemistry X-ray crystallographic and Biophysics facilities for access to instrumentation.

Notes and references

‡ CK2 α -interacting loop of CK2 β (GGLKRLYGFKIHPPMAYQLQLKGG) displayed on the biotinylated globular ATPase domain of recombinase RadA.⁴⁸

- 1 L.-G. Milroy, T. N. Grossmann, S. Hennig, L. Brunsveld and C. Ottmann, *Chem. Rev.*, 2014, **114**, 4695–4748.
- 2 L. D. Fader, E. Malenfant, M. Parisien, R. Carson, F. Bilodeau, S. Landry, M. Pesant, C. Brochu, S. Morin, C. Chabot, T. Halmos, Y. Bousquet, M. D. Bailey, S. H. Kawai, R. Coulombe, S. LaPlante, A. Jakalian, P. K. Bhardwaj, D. Wernic, P. Schroeder, M. Amad, P. Edwards, M. Garneau, J. Duan, M. Cordingley, R. Bethell, S. W. Mason, M. Bös, P. Bonneau, M. A. Poupert, A. M. Faucher, B. Simoneau, C. Fenwick, C. Yoakim and Y. Tsantrisos, *ACS Med. Chem. Lett.*, 2014, **5**, 422–427.
- 3 K. G. McLure, E. M. Gesner, L. Tsujikawa, O. A. Kharenko, S. Attwell, E. Campeau, S. Wasiak, A. Stein, A. White, E. Fontano, R. K. Suto, N. C. Wong, G. S. Wagner, H. C. Hansen and P. R. Young, *PLoS One*, 2013, **8**, e83190.
- 4 B. B. Lao, I. Grishagin, H. Mesallati, T. F. Brewer, B. Z. Olenyuk and P. S. Arora, *Proc. Natl. Acad. Sci. U. S. A.*, 2014, **111**, 7531–7536.
- 5 K. Busschots, L. A. Lopez-Garcia, C. Lammi, A. Stroba, S. Zeuzem, A. Piiper, P. M. Alzari, S. Neimanis, J. M. Arencibia, M. Engel, J. O. Schulze and R. M. Biondi, *Chem. Biol.*, 2012, **19**, 1152–1163.
- 6 O. Mirguet, R. Gosmini, J. Toum, C. A. Clément, M. Barnathan, J. M. Brusq, J. E. Mordaunt, R. M. Grimes, M. Crowe, O. Pineau, M. Ajakane, A. Daugan, P. Jeffrey, L. Cutler, A. C. Haynes, N. N. Smithers, C. W. Chung, P. Bamborough, I. J. Uings, A. Lewis, J. Witherington, N. Parr, R. K. Prinjha and E. Nicodème, *J. Med. Chem.*, 2013, **56**, 7501–7515.
- 7 S. He, T. J. Senter, J. Pollock, C. Han, S. K. Upadhyay, T. Purohit, R. D. Gogliotti, C. W. Lindsley, T. Cierpicki, S. R. Stauffer and J. Grembecka, *J. Med. Chem.*, 2014, **57**, 1543–1556.
- 8 T. A. F. Cardote and A. Ciulli, *ChemMedChem*, 2016, **11**, 787–794.
- 9 M. Pelay-Gimeno, A. Glas, O. Koch and T. N. Grossmann, *Angew. Chem., Int. Ed.*, 2015, **54**, 8896–8927.
- 10 K. Fosgerau and T. Hoffmann, *Drug Discovery Today*, 2015, **20**, 122–128.
- 11 J. Iegre, J. S. Gaynord, N. S. Robertson, H. F. Sore, M. Hyvonen and D. R. Spring, *Adv. Ther.*, 2018, **1**, 1800052.
- 12 Y. Wang, B. J. Bruno, S. Cornillie, J. M. Nogueira, D. Chen, T. E. Cheatham, C. S. Lim and D. H. C. Chou, *Chem.-Eur. J.*, 2017, **23**, 7087–7092.
- 13 C. M. Grison, G. M. Burslem, J. A. Miles, L. K. A. Pils, D. J. Yeo, Z. Imani, S. L. Warriner, M. E. Webb and A. J. Wilson, *Chem. Sci.*, 2017, **8**, 5166–5171.
- 14 N. Assem, D. J. Ferreira, D. W. Wolan and P. E. Dawson, *Angew. Chem., Int. Ed.*, 2015, **54**, 8665–8668.
- 15 G. K. Dewkar, P. B. Carneiro and M. C. T. Hartman, *Org. Lett.*, 2009, **11**, 4708–4711.
- 16 C. J. O'Connor, L. Laraia and D. R. Spring, *Chem. Soc. Rev.*, 2011, **40**, 4332–4345.
- 17 Y. H. Lau, Y. Wu, P. de Andrade, W. R. J. D. Galloway and D. R. Spring, *Nat. Protoc.*, 2015, **10**, 585–594.
- 18 Y. S. Tan, D. P. Lane and C. S. Verma, *Drug Discovery Today*, 2016, **21**, 1642–1653.
- 19 W. Xu, Y. H. Lau, G. Fischer, Y. S. Tan, A. Chattopadhyay, M. De La Roche, M. Hyvönen, C. Verma, D. R. Spring and L. S. Itzhaki, *J. Am. Chem. Soc.*, 2017, **139**, 2245–2256.
- 20 J. Iegre, N. S. Ahmed, J. S. Gaynord, Y. Wu, K. M. Herlihy, Y. S. Tan, M. E. Lopes-Pires, R. Jha, Y. H. Lau, H. F. Sore, C. Verma, D. H. O'Donovan, N. Pugh and D. R. Spring, *Chem. Sci.*, 2018, **20**, 4638–4643.
- 21 L. Zhang, T. Navaratna and G. M. Thurber, *Bioconjugate Chem.*, 2016, **27**, 1663–1672.
- 22 A. Siddiqui-Jain, D. Drygin, N. Streiner, P. Chua, F. Pierre, S. E. Oeapos Brien, J. Bliesath, M. Omori, N. Huser, C. Ho, C. Proffitt, M. K. Schwaeb, D. M. Ryckman, W. G. Rice and K. Anderes, *Cancer Res.*, 2010, **70**, 10288–10298.
- 23 R. Prudent and C. Cochet, *Chem. Biol.*, 2009, **16**, 112–120.
- 24 P. Brear, C. De Fusco, K. Hadje Georgiou, N. J. Francis-Newton, C. J. Stubbs, H. Sore, A. Venkitaraman, C. Abell, D. R. Spring and M. Hyvönen, *Chem. Sci.*, 2016, **7**, 6839–6845.
- 25 J. Iegre, P. Brear, C. De Fusco, M. Yoshida, S. L. Mitchell, M. Rossmann, L. Carro, H. F. Sore, M. Hyvönen and D. R. Spring, *Chem. Sci.*, 2018, **11**, 3041–3049.
- 26 B. Laudet, C. Barette, V. Dulery, O. Renaudet, P. Dumy, A. Metz, R. Prudent, A. Deshiere, O. Dideberg, O. Filhol and C. Cochet, *Biochem. J.*, 2007, **408**, 363–373.
- 27 B. Laudet, V. Moucadet, R. Prudent, O. Filhol, Y. S. Wong, D. Royer and C. Cochet, *Mol. Cell. Biochem.*, 2008, **316**, 63–69.
- 28 B. Bestgen, Z. Belaid-Choucair, T. Lomberget, M. Le Borgne, O. Filhol and C. Cochet, *Pharmaceuticals*, 2017, **10**, e16.
- 29 P. Brear, A. North, J. Iegre, K. Hadje Georgiou, A. Lubin, L. Carro, W. Green, H. F. Sore, M. Hyvönen and D. R. Spring, *Bioorg. Med. Chem.*, 2018, **26**, 3016–3020.
- 30 O. Filhol, A. Nueda, D. Gerber-scokaert, M. Jose, C. Souchier, Y. Saoudi and C. Cochet, *Mol. Cell. Biol.*, 2003, **23**, 975–987.
- 31 G. Poletto, J. Vilardell, O. Marin, M. A. Pagano, G. Cozza, S. Sarno, A. Falqués, E. Itarte, L. A. Pinna and F. Meggio, *Biochemistry*, 2008, **47**, 8317–8325.

- 32 O. Marin, S. Sarno, M. Boschetti, M. A. Pagano, F. Meggio, V. Ciminale, D. M. D'Agostino and L. A. Pinna, *FEBS Lett.*, 2000, **481**, 63–67.
- 33 A. C. Bibby and D. W. Litchfield, *Int. J. Biol. Sci.*, 2005, **1**, 67–79.
- 34 J. Raaf, B. Guerra, I. Neundorff, B. Bopp, O. G. Issinger, J. Jose, M. Pietsch and K. Niefind, *ACS Chem. Biol.*, 2013, 901–907.
- 35 M. M. Wiedmann, Y. S. Tan, Y. Wu, S. Aibara, W. Xu, H. F. Sore, C. S. Verma, L. Itzhaki, M. Stewart, J. D. Brenton and D. R. Spring, *Angew. Chem., Int. Ed.*, 2017, **56**, 524–529.
- 36 Y. H. Lau, P. de Andrade, S.-T. Quah, M. Rossmann, L. Laraia, N. Sköld, T. J. Sum, P. J. E. Rowling, T. L. Joseph, C. Verma and D. R. Spring, *Chem. Sci.*, 2014, **5**, 1804.
- 37 P. T. Tran, C. Ø. Larsen, T. Røndbjerg, M. De Foresta, M. B. A. Kunze, A. Marek, J. H. Løper, L. E. Boyhus, A. Knuhtsen, K. Lindorff-Larsen and D. S. Pedersen, *Chem.–Eur. J.*, 2017, **23**, 3490–3495.
- 38 L. Zhang, T. Navaratna, J. Liao and G. M. Thurber, *Bioconjugate Chem.*, 2015, **26**, 329–337.
- 39 Y. S. Tan, D. R. Spring, C. Abell and C. Verma, *J. Chem. Inf. Model.*, 2014, **54**, 1821–1827.
- 40 Y. S. Tan, D. R. Spring, C. Abell and C. S. Verma, *J. Chem. Theory Comput.*, 2015, **11**, 3199–3219.
- 41 M. S. Searle and D. H. Williams, *J. Am. Chem. Soc.*, 1992, **114**, 10690–10697.
- 42 S. Vajda, Z. Wheng, R. Rosenfeld and C. DeLisi, *Biochemistry*, 1994, **33**, 13977–13988.
- 43 A. R. Khan, J. C. Parrish, M. E. Fraser, W. W. Smith, P. A. Barlett and M. N. James, *Biochemistry*, 1998, **37**, 16839–16845.
- 44 A. Schnitzler, B. B. Olsen, O. G. Issinger and K. Niefind, *J. Mol. Biol.*, 2014, **426**, 1871–1882.
- 45 G. H. Bird, N. Madani, A. F. Perry, A. M. Princiotta, J. G. Supko, X. He, E. Gavathiotis, J. G. Sodroski and L. D. Walensky, *Proc. Natl. Acad. Sci. U. S. A.*, 2010, **107**, 14093–14098.
- 46 M. Kristensen, D. Birch and H. M. Nielsen, *Int. J. Mol. Sci.*, 2016, **17**, e185.
- 47 C. Bechara and S. Sagan, *FEBS Lett.*, 2013, **587**, 1693–1702.
- 48 M. Rossmann, S. J. Greive, T. Moschetti, M. Dinan and M. Hyvönen, *Protein Eng., Des. Sel.*, 2017, **30**, 419–430.